

# Working with fibre cement cladding

Fibre cement cladding panels have a hard decorative coating fused to a fibre cement sheet. To achieve the best results in respect of edge finish and accuracy, the following points should be carefully considered and employed.

## 1. Cutting

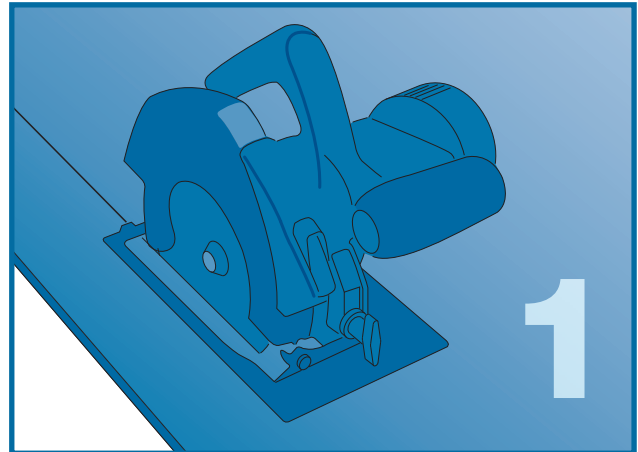
Cutting of panels can be achieved using:

- Stationary table saws
- Circular saws
- The Mafell portable panel saw system
- Compass saws
- Jigsaws

DO NOT use an angle grinder.

### Cutting to size

- Use firm work benches capable of fully supporting the panel
- Saw blades of the highest quality should be used; diamond tipped circular saws; diamond tipped for Mafell panel saws; ABCsaw blades for compass saws; tungsten carbide black jigsaw blades. Silicon carbide and diamond cutting discs should not be used for cutting fibre cement
- Cutting and feeding speeds will be dependent on the power tool used and by practical trial

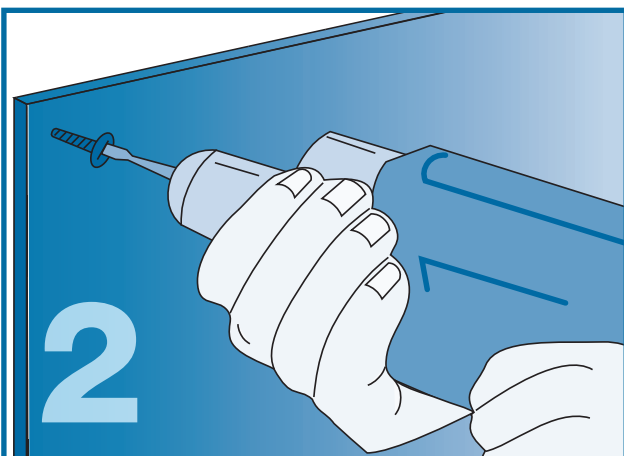


### General

When cutting any high performance claddings care must be taken to avoid direct contact of the face with the cutting table. Ideally only one sheet should be cut at a time and protected clamps should be used to hold the panel rigid on the work bench to avoid any slipping.

Cutting tolerance of +/- 2mm are to be expected.

Cutting tolerance and edge detailing should be agreed between the fabricator, specifier and installer.



## 2. Drilling

For predrilling panels cleanly and accurately we recommend using HSS (high speed steel) drills or tungsten carbide tipped drills.

Hole diameter will depend upon the framing to be fixed back to timber or metal framing.

Immediately remove dust from cutting/drill holes using a vacuum or soft brush or dry soft and clean cloths.

It is advisable to coat the undercut anchor holes with Luko solution (please refer to Luko application instructions overleaf).

# Working with fibre cement cladding

## 3. Finishes

Site cut edges of the following fibre cement panels must be sealed with Luko solution:

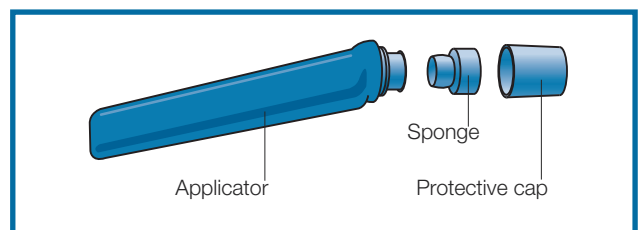
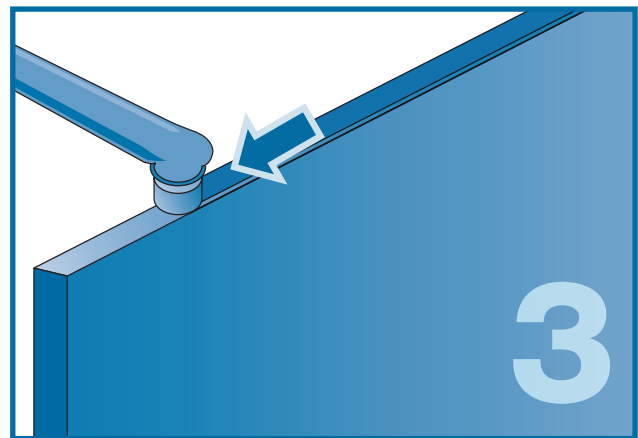
- Natura
- Textura
- Pictura
- Cedral Weatherboard Woodstain colours

### Edge finish

It is advisable to sand/chamfer the decorative edge/corner of the panels to remove the sharp arris, after cutting them to size and before the application of Luko solution. This reduces the possibility of damage and improves their appearance. A block of wood, approx. 400 x 100 mm in size, with a piece of sandpaper (80-grit) affixed to it can be used to sand the edges or a diamond electrostatic block can be used.

### Application of Luko

- i) Edges must be clean and dry
- ii) Remove protective cap
- iii) Use with kit reservoir pointing upwards
- iv) Position sponge right-angled to the edge and run twice along the edge with moderate pressure
- v) Luko should not flow onto the face of the panel, wipe off immediately with damp cloth
- vi) Check Luko has been applied along the entire length of the sheet
- vii) Replace protective cap when interrupting the job
- viii) Replace sponge when worn



### Guidance for Luko solution

- Finishing must be applied sheet by sheet not in a stack/mass application
- Shake Luko solution well before application
- Do not reuse Luko solution once it has been in the applicator for over 2 hours
- Luko solution must not be diluted
- The complete impregnation of the edges of the cladding board prevents moisture absorption along the edges and any resulting temporary discolouring of the visible surface at the edges. The Luko solution must completely cover the cut edge and will show as a complete glossy finish to the cut edge
- Do not allow to freeze – should be stored between 5 - 25°C
- Respect the use by date

→ Advice, literature and samples

W [www.marleyeternit.co.uk/cladding](http://www.marleyeternit.co.uk/cladding)

T 01283 722588

E [info@marleyeternit.co.uk](mailto:info@marleyeternit.co.uk)

