

Fibre cement slates

Innovative solutions



A+

Manufactured in the UK, only Marley Eternit's fibre cement slates can achieve an A+ rating for the lowest environmental impact in the Green Guide to Specification.

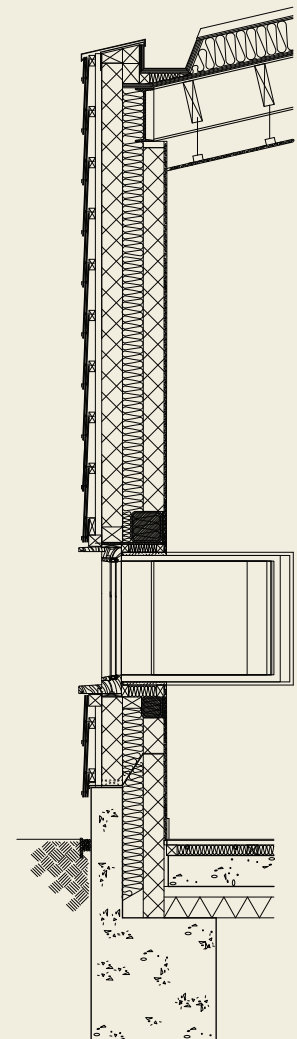
Canon Popham Primary School

DSDHA were commissioned to design a new nursery within the existing grounds of Canon Popham Primary School by the Governors and the Diocese of Sheffield in 2005. Through design development with the school, the brief evolved to provide a dedicated new Foundation unit incorporating the existing reception class to promote a more progressive education policy.

The client group wanted to avoid the perception of corridors so that the building was conceived as a series of interlinked teaching spaces, which extend outdoors through glazed doors to a generous covered play area, wrapping around two sides of the building.

The use of fibre cement slate cladding on all elevations of the building has introduced a child scale element to the facade and is a direct reference to the surrounding context. The children can use the slates as a giant blackboard – which can be wiped clean at the end of each day. A timber frame structure has employed traditional construction methodology to create the irregular pitch of the roof and non-orthogonal plan.

The building was located to allow ease of access to parents without disturbing the activities of the main school and is approached from the main school playground to encourage the sense of belonging to a one-school community.



Wall cross section



Project: Canon Popham
Primary School

Application: Education

Location: Doncaster

Product: Thrutone fibre cement slates

Architect: DSDHA

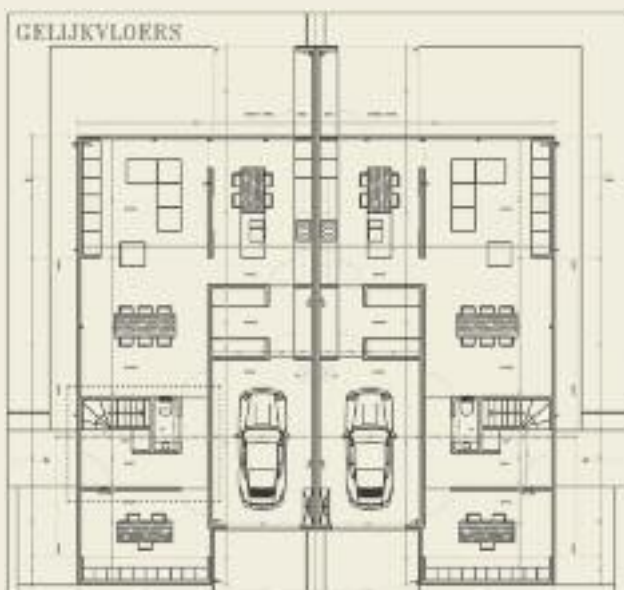
Contractor: George Hurst and Sons

Photos: Helene Binet





Semi-detached house



Fibre cement slates have been used to create a stunning variation of the traditional semi in Nieuwenhove, Belgium.

Based on a timber construction, the houses have a narrow rectangular ground plan, and stand parallel to one another with dining kitchens and garages located along their party wall.

Their shape is traditional with a full ground floor, attic storey with sloping ceilings and traditional ridge roof, all clad with fibre cement slates from the ridge down to the plinth.

Although sparse in detail, the simple shape and choice of material combines to create an unusual but stunning effect.



Project: Semi-detached house

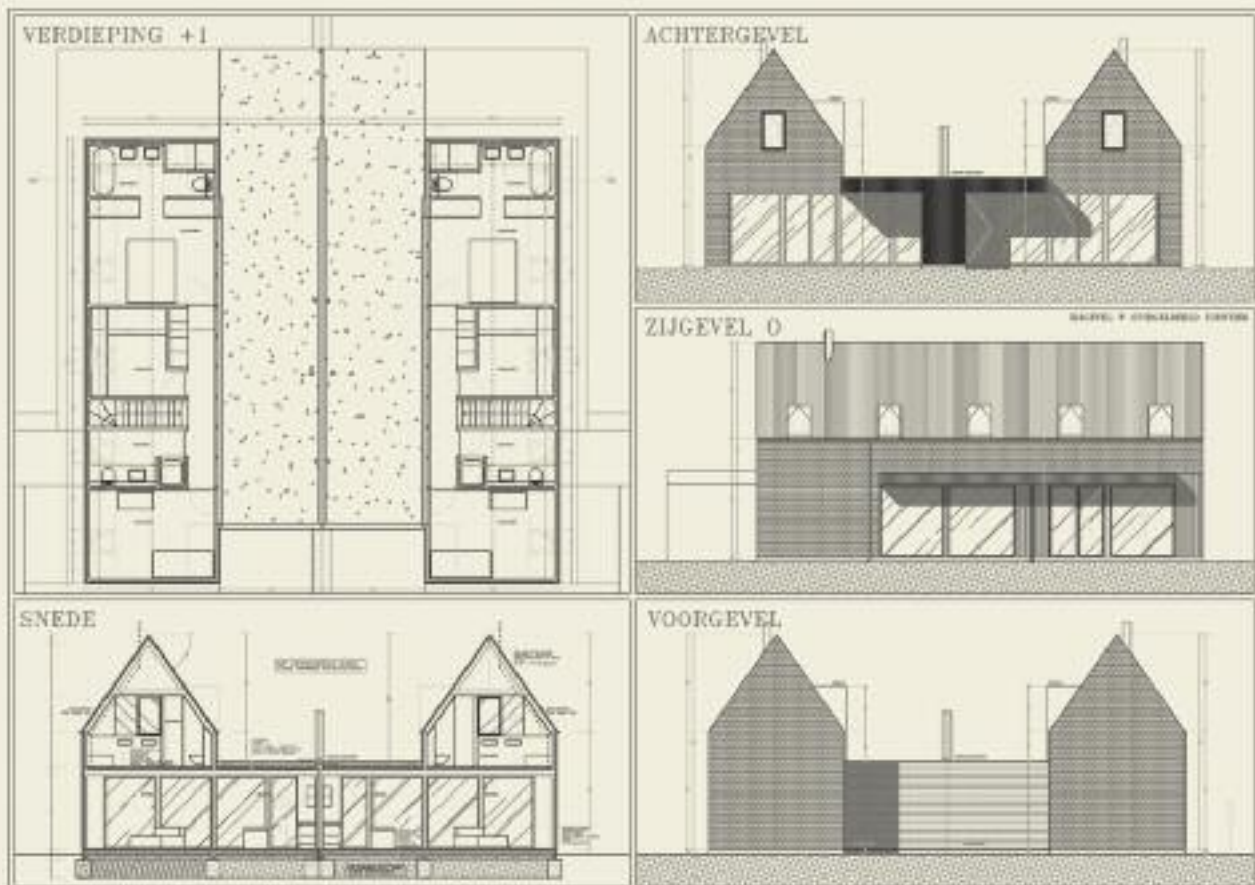
Application: Housing

Location: Nieuwenhove, Belgium

Product: Fibre cement slates

Architect: B@sic Architects

Photos: Peter de Kegel





Project: Todlaw assisted living

Application: Healthcare

Location: Berwick, Scotland

Product: Thrutone fibre cement slates

Architect: Oliver Chapman Architects

Photos: Andrew Smith



Todlaw 'assisted living'

Leading roofing manufacturer, Marley Eternit, has helped turn an architect's vision into a reality, when it supplied fibre cement slates for use on an innovative assisted housing project in Scotland.

Working on behalf of Berwickshire Housing Association, Oliver Chapman Architects were tasked with designing 14 fully-accessible semi-detached homes and one shared services building for people requiring more substantial 24-hour care. The practice was keen to design a modern looking development which would offer a comfortable and aesthetically pleasing, yet practical environment for residents to live in. The roof represented an important aspect of the architect's design featuring two larch elevations coupled with a roof-run down to the ground.

“The product was perfect for achieving the smooth finish that we were looking for and as usual, we benefited from Marley Eternit's experienced technical experts who were happy to offer advice and guidance whenever needed.”

Oliver Chapman, Oliver Chapman Architects

With such a unique design, the practice wanted to select a roof covering which would complement the overall look of the building. With the help and advice of Marley Eternit, the Thrutone fibre cement slates in blue/black colour were specified for the project which had a total roof area of 14,000 square metres. With its smooth surface and square-cut edges, the Thrutone fibre cement slate provided the architect with the neat and modern finish required for the building.

Recognising the importance of designing buildings which make use of sustainable products, the architect was also keen to select a roof covering that would have minimal negative impact on the environment. The Thrutone fibre cement slate achieved this goal. Manufactured in the UK, Marley Eternit's fibre cement slates are the only slate products of their kind which can achieve the A+ rating in the Building Research Establishments (BRE) Green Guide.

Oliver Chapman of Oliver Chapman Architects explains: “We had worked with Berwickshire Housing Association on a previous project which was a huge success and has since won several awards. We wanted to emulate this success on the latest project and so went for an innovatively designed building that we hoped residents would be happy to live in. The design of the roof was particularly striking and so we wanted a covering that would match it appropriately.”

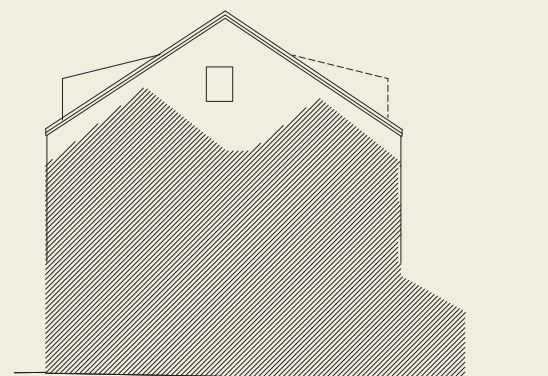
“Having worked happily with Marley Eternit products in the past, we decided that the manufacturer was also the right choice for this job and selected its Thrutone fibre cement slate.”

“The product was perfect for achieving the smooth finish that we were looking for and as usual, we benefitted from Marley Eternit's experienced technical experts who were happy to offer advice and guidance whenever needed.”

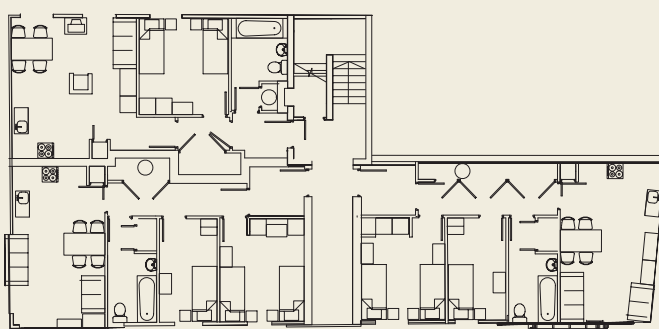
“Although we wanted to achieve a contemporary design, we were keen to match this aim by using modern products as well, which would offer environmental benefits. This is becoming an increasingly important factor in projects that we work on and we were pleased to discover that the Marley Eternit product would meet that requirement.”



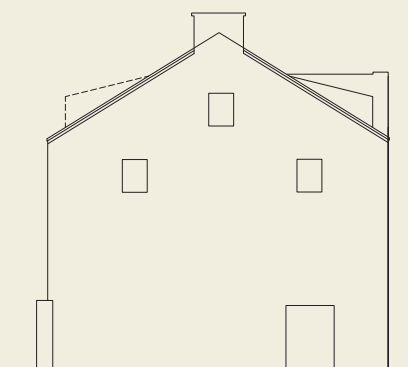
Phase 2 West elevation



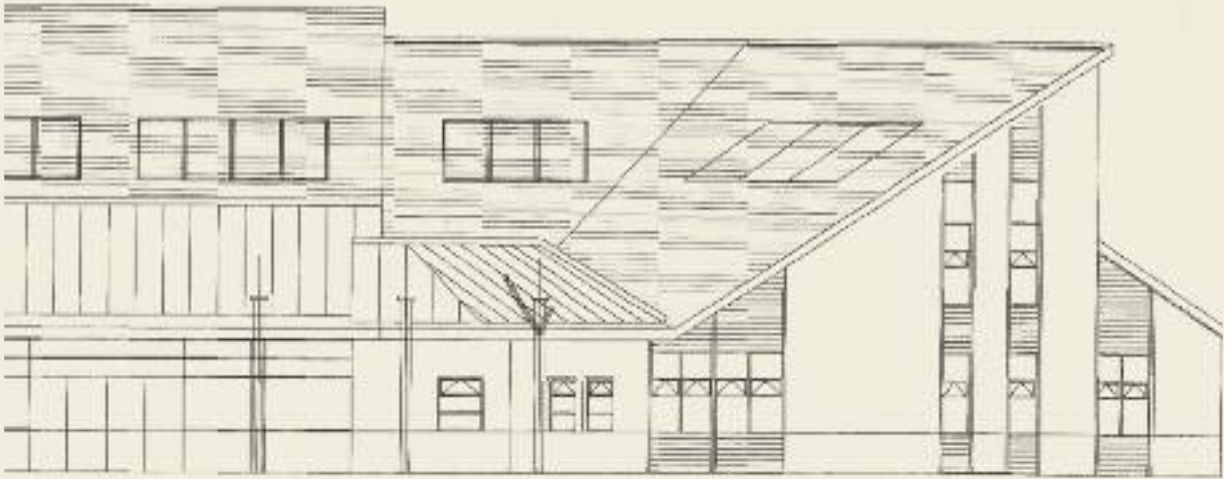
Phase 2 South elevation



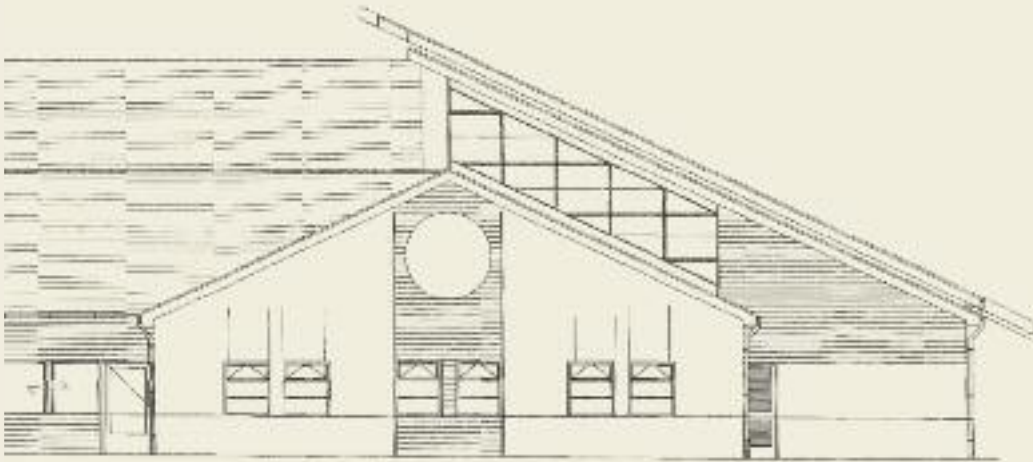
Ground floor plan



Phase 2 North elevation



West elevation



North elevation



Project: Portfield Special School

Application: Education

Location: Haverfordwest

Product: Rivendale fibre cement slates

Architect: Pembrokeshire County Council

Contractor: Camilleri Roofing

Photos: Andrew Smith



Portfield School

When spending funds from the public purse, it is essential that specifications made on building projects can be seen to deliver both in terms of suitability for the scheme in question, as well as offering excellent value for money. These were the requirements that Pembrokeshire County Council was looking to satisfy when it set about developing Portfield Special School.

“Marley Eternit fibre cement slates were chosen for the new Portfield School scheme in Haverfordwest due to its close aesthetic match to natural slate with its textured surface and dressed edges. The UK manufactured slate provided an A+ BRE rating and really good value for money.”

Andrew Nicholas, Pembrokeshire County Council Architect

Using Marley Eternit's Rivendale fibre cement slates, the council were able to deliver on some key scheme objectives and support the overall design vision. The council's design team laid out some fundamental characteristics which the roofing design had to fulfil. It wanted to replicate the design style that was prevalent in the surrounding area so that the new scheme would blend in with the local built environment.

Mindful of pressurised public funds, the roofing solution also had to be both cost effective to install and have low maintenance commitments for the future so that ongoing and continued remedial work would be kept to a minimum.

All the key objectives were met through the specification of the Rivendale fibre cement slates in a blue/black colour choice. With a finely detailed surface and dressed edges, Rivendale reproduces the attractive appearance of natural slate, but without the environmental consequences of having to use a scarce natural product. The Rivendale is lightweight and offers strength and a durable performance, whilst also delivering an economic, authentic and easily installed alternative to a natural roofing material such as slate. In addition, all Marley Eternit's fibre cement slates are manufactured in the UK and are the only slate product of its kind that can achieve an A+ rating, the lowest environmental impact in the Building Research Establishments Green Guide to Specification.

The 3000 sq metre roof was installed by Camilleri Roofing and has provided the architectural team with a solution to meet its building requirements. The blue/black colour scheme has helped the school blend in attractively with the local traditional roofing style so it fits in seamlessly with its surroundings.





Project: Guest pavilion

Application: Commercial

Location: Putten, The Netherlands

Product: Fibre cement slates

Architect: na-ma architecture

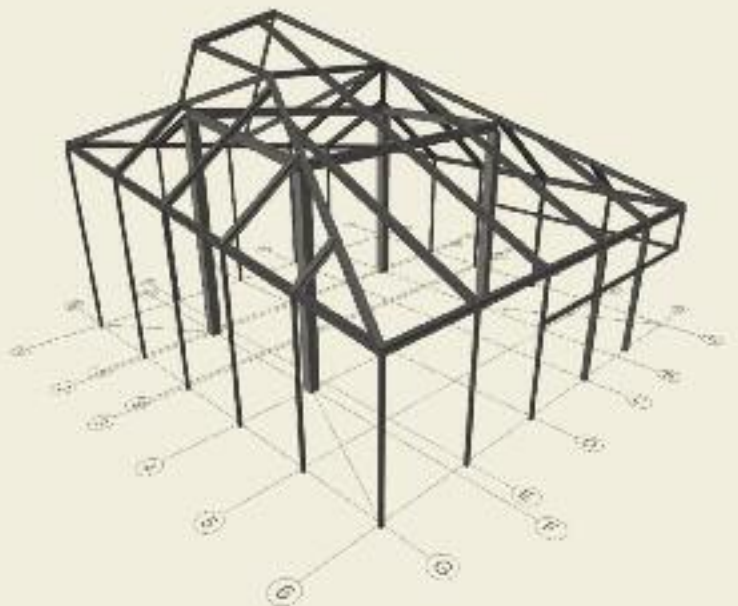
Photos: Marcel va Coile

Woodland tea house

A small guest pavilion for training and demonstration is an exhibit in itself thanks to fibre cement slates.

The building, which belongs to a tree nursery, demonstrates how the combination of several materials, including fibre cement slates, weathered timbers, light oak and large glass surfaces creates a dynamic and harmonious design.

The architects opted for fibre cement slates for the building envelope, partly to blend in with the environment in which it is built, and partly to create the look of an old black wooden barn. The fibre cement creates a gentle discord amidst the large woodland area in which it is located.







The Cavell Centre, Thrutone fibre cement slates, Bretton, Cambridgeshire
Application: Healthcare Architect: Multiplex Contractor: Hereward Roofing

For more project information, visit: www.marleyeternit.co.uk/casestudies

→ Want to request a sample or more information?

Visit www.marleyeternit.co.uk

E-mail roofinginfo@marleyeternit.co.uk

Call 01283 722588

Freepost Fill in and return the reply paid card attached



an **Etex** GROUP company