

A+

Marley Eternit's fibre cement cladding can achieve an A+ rating as defined in the BRE Green Guide to Specification*

Healthcare

INNOVATIVE FIBRE CEMENT
CLADDING SOLUTIONS



Ebbw Vale Hospital (Ysbyty Aneurin Bevan)



Location: Ebbw Vale

Products: External – Natura fibre cement cladding
Internal – Duripanel fibre cement building board

Colours: Natura in Opal and White

Specifier: Nightingale Associates

Contractor: Natura – Almass Cladding Systems
Duripanel – Atkin Trade Specialists

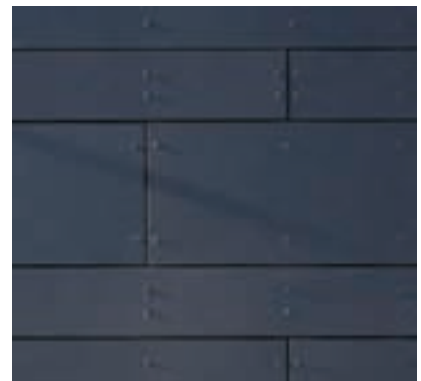
Photos: Andrew Smith

“

Natura and Duripanel created an effective and robust facade solution for the new hospital.

As well as being an integral part of helping us meet our environmental commitments, we particularly liked how the colour and appearance of Natura complemented the other materials used on this project.”

Norman Robson-Smith, Architect,
Nightingale Associates

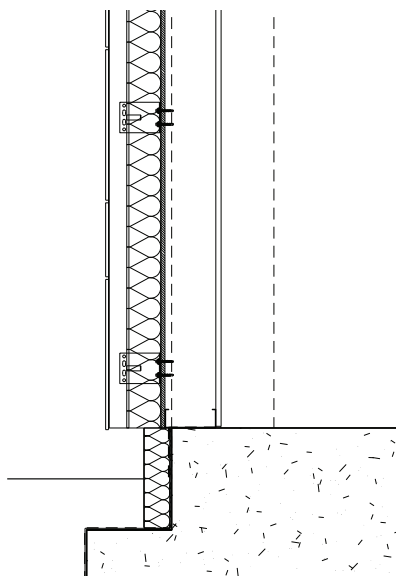


Hospital benefits from inside out fibre cement cladding solution from Marley Eternit

The new £54m NEAT* Excellent rated Ebbw Vale Hospital (Ysbyty Aneurin Bevan) has benefited from a complete inside-out cladding solution, using fibre cement Natura as a decorative rainscreen facade, along with Duripanel as an outer sheathing cement board.

Natura in Opal and White was used to clad the exterior of the building, creating a rear ventilated cavity between it and the Duripanel, achieving an overall wall U-value of 0.26Wm²k.

Natura fibre cement panels are designed for external cladding applications and provide a tough and practical rainscreen solution, suitable for use on a variety of applications. The surface finish allows the fibre cement substrate to show through, creating a unique and attractive appearance.



Opal Natura was specified because it complemented other materials used on the facade, including green patinated copper and timber. White was used around the entrance area to match the light coloured insulated render.

Natura is available in a wide choice of colours and the practical qualities of the material include fire classifications A2-s1-d0 non combustible and EN 13501-1, durability, strength and an installed life expectancy of at least 50 years.

The internal walls of the building were finished using plasterboard, rigid insulation and Marley Eternit Duripanel acting as the outer sheathing board.

Duripanel is a smooth, highly durable, rot-resistant structural cement-bonded particle board. It can be used in load-bearing applications and provides acoustic insulation as well as impact and moisture resistance.

* NEAT (NHS Environmental Assessment Tool) was replaced on the 1st July 2008 by BREEAM Healthcare (B4H). Ysbyty Aneurin Bevan was commenced before 1st July 2008.

Darlington Memorial Hospital

Location: Darlington

Product: Pictura in Grey

Specifier: Devereux Architects

Contractor: Laing O'Rourke

Photos: Andrew Smith

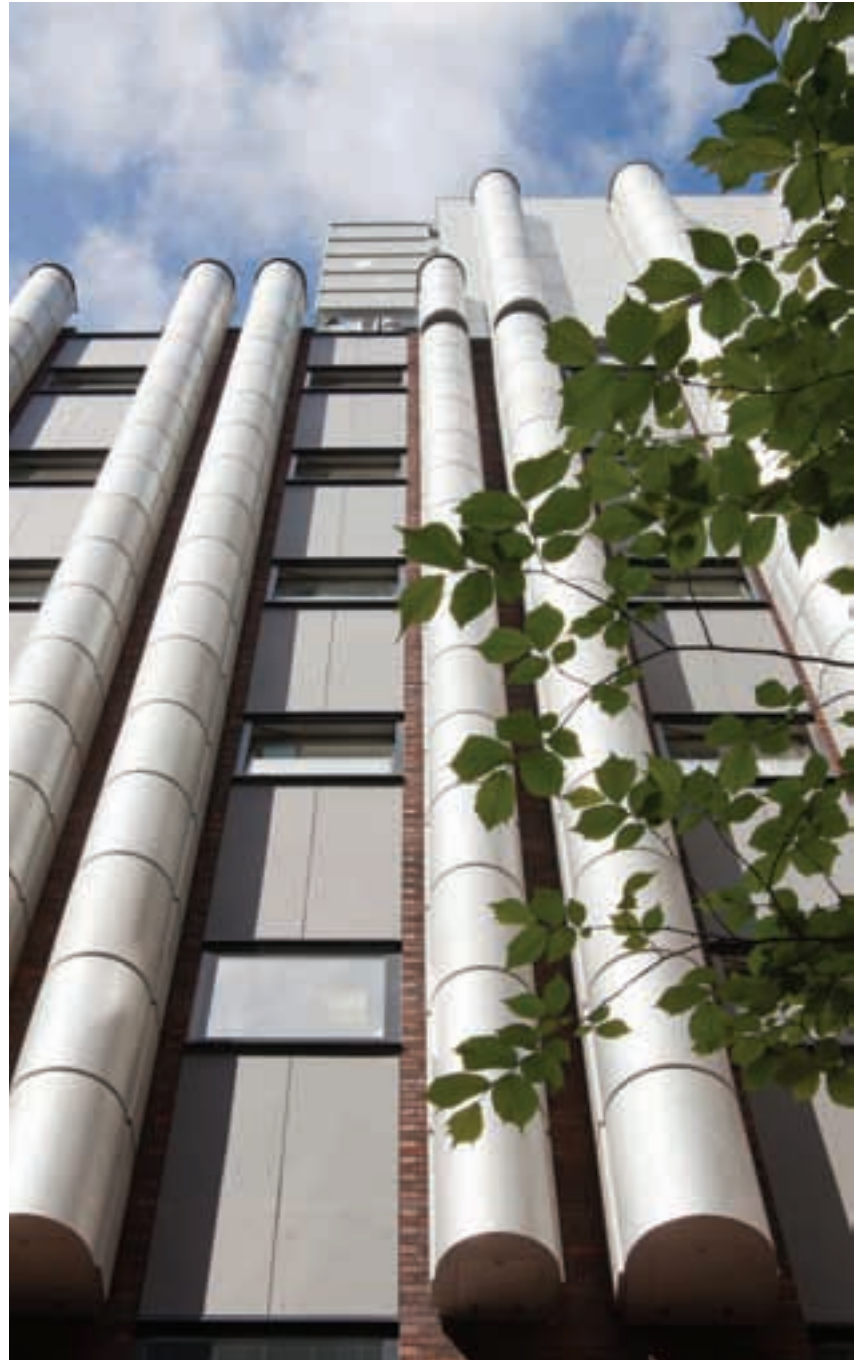
“

We had no hesitation in specifying fibre cement Pictura as an overclad solution because it overcame all the issues presented by the other materials.”

Peter Churchill, Devereux Architects



Darlington Memorial Hospital – prior to overcladding





Marley Eternit fibre cement overclad raises temperature at hospital

A fibre cement overclad solution from Marley Eternit has helped boost thermal efficiency, improve aesthetics and reduce maintenance requirements for Darlington Memorial Hospital.

Pictura in Grey was specified to replace the existing opaque glass panels, which required regular cleaning and maintenance.

County Durham and Darlington NHS Foundation Trust commissioned the refurbishment because it wanted to reduce maintenance requirements, improve thermal efficiency and enhance the aesthetic appearance of the dated building.

The hospital's thermal performance was improved by fitting composite insulated panels onto the wall-mounted vertical aluminium frame system between floor levels and then overcladding it with Pictura to create a rainscreen cladding insulation solution.

Pictura was specified by Devereux Architects, who had investigated alternative materials for the infill panels, including PVC-U, timber, GRP and glass. Each of these was rejected because of its appearance, cost, durability or maintenance requirements.

Peter Churchill of Devereux Architects explains: "We had no hesitation in specifying fibre cement Pictura as an overclad solution because it overcame all the issues presented by the other materials. We then talked to Marley Eternit's technical advisory team about the various fixing systems available and eventually decided on stainless steel screws."

Pictura offers a hard, smooth, silky matt surface that is smooth and easy to clean. Its UV cured top layer also provides protection against graffiti by aerosol and other paints, which can be eliminated with common graffiti removers. Pictura is also available in a range of colours, has an installed life expectancy of at least 50 years and has excellent weather resistance as well as being resistant to insects, mould growth and fungi.

Singleton Hospital



Location:	Swansea
Product:	Natura in Anthracite
Specifier:	Nightingale Associates
Contractor:	BAM
Photos:	Andrew Smith

“
Feedback has been very positive. The Marley Eternit cladding enhances the design and gives the building a modern 21st century aesthetic.”

Richard Golledge, Nightingale Associates

Marley Eternit cladding just the tonic for a quick build

Fibre cement cladding panels from Marley Eternit helped architects Nightingale Associates meet the brief to provide a day surgery unit in the shortest timeframe possible.

Lightweight Natura rainscreen panels in Anthracite were specified to clad, in an outsized planking effect, the whole of the 1,150m² site at Singleton hospital on Sketty Lane, Swansea, for Swansea NHS Trust.

Richard Golledge of Nightingale Associates said: “We wanted a mechanical system which was quick to install and to minimise the level of wet trades on site. We also wanted a panel system that we could use to disguise the repetitive nature of the off-site volumetric approach as each unit is only three metres wide.

“Anthracite was used because the backdrop of the building has a band of trees on the site boundary and dark grey actually helps the building recede into this green backdrop.”

A partnering contract that brought the design team, contractor and client together at an early stage, more than met the brief, with the volumetric off-site units delivered and erected in just five days. The whole project, from inception to completion, took less than 12 months.

Now the trust has a building with 850m² of fire-resistant and low-maintenance envelope that has since won a Lord Mayor’s Design Award for the city and county of Swansea.

Mr Golledge added: “The Marley Eternit cladding was very important to the success of the scheme which is entirely clad in Natura board in a rather monolithic way. It would have been a very different building if anything else was used.”



Luton and Dunstable Hospital

Location: Luton

Products: Cedral Weatherboard
in Grey and Dark Grey

Specifier: Huggins Bromage Ferguson LLP

Contractor: Neville Special Projects Ltd

Photos: Andrew Smith

“
We knew about the low maintenance benefits of fibre cement and therefore decided to replace the timber boards with Cedral Weatherboard. As soon as we saw Cedral Weatherboard we knew it was right for the Trust – it was indistinguishable from timber and had none of the maintenance issues.”

Gawain Ferguson, Partner,
Huggins Bromage Ferguson LLP



Cedral Weatherboard breathes new life into hospital building

Marley Eternit Cedral Weatherboard has been specified as an overclad solution on the Robin Pinto Unit at Luton and Dunstable Hospital.

Fibre cement Cedral Weatherboard is an ideal low maintenance, rot-free alternative to traditional timber weatherboarding and is available in a wide range of factory applied solid colours and woodstains.

The original dark oak stained timber cladding on the Robin Pinto Unit had begun to deteriorate, prompting the client to initiate a complete refurbishment of the building's exterior.

South Essex Partnership University NHS Foundation Trust, the client, was concerned that the original timber facade required a complete overhaul so soon after the last round of maintenance, which was completed in 2008.

The stain used on the boards had begun to deteriorate exposing the timber to the elements which, if left unchecked, would have led to issues with weather tightness of the facade. The timber at ground level had also begun to rot.



Faced with having to remove the surface finish from the timber cladding, a huge task in itself and then re-applying a new base coat and stain, with no guarantee that it wouldn't have to be repeated again in a few years, the client asked the architects to look at alternative low maintenance materials.

“We knew about the low maintenance benefits of fibre cement and therefore decided to replace the timber boards with Cedral Weatherboard,” said Gawain Ferguson, partner at Huggins Bromage Ferguson LLP. “As soon as we saw Cedral Weatherboard we knew it was right for the Trust – it was indistinguishable from timber and had none of the maintenance issues.”

Cedral Weatherboard in Grey was the predominant colour specified on the Robin Pinto unit, with Dark Grey used on two gable elevations. Matching coloured Marley Eternit aluminium trims were used around the windows to create a fully co-ordinated look.

Once the original timber boards had been removed, the Cedral Weatherboard was nailed to the existing battens in a shiplap arrangement.

Warren Sparrow from Neville Special Projects Ltd, the installers, said: “This was the first time we had used Cedral Weatherboard although our installers soon began to understand its advantages – it can be cut and drilled just like real timber and requires no further finishing on site. It looks great too, and we will be recommending Cedral Weatherboard to any clients that have issues with timber facades, cracks in cement render or spalling brickwork.”

Cedral Weatherboard is used widely on both new build projects and as an overclad solution, where it offers excellent aesthetics, low maintenance and ease of installation.



Luton and Dunstable Hospital – prior to overcladding



Luton and Dunstable Hospital – prior to overcladding

Caerphilly Hospital (Ysbyty Ystrad Fawr)



Location: Caerphilly

Product: Natura in Anthracite
and Cool Grey

Specifier: Nightingale Associates

Contractor: BAM

Photos: Andrew Smith

“
*Materials for the external
facade were chosen because
of their visual properties, low
maintenance requirements
and cost effectiveness.*

*We specified Natura because
it met all these criteria.*”

Lindsay Gibbon, Architect,
Nightingale Associates



Smooth operation by Marley Eternit fibre cement cladding

The new £129m Caerphilly hospital (Ysbyty Ystrad Fawr) has benefited from a low maintenance rainscreen cladding solution from Marley Eternit.

Natura fibre cement cladding with the Pro coating was used as a decorative rainscreen facade on the BREEAM Excellent rated project.

Anthracite coloured Natura was specified, along with a feature banding in the lighter Cool Grey, because these hues were considered to have timeless qualities, blending with the hospital's semi-rural location. They also provide a contrast to the aluminium coloured vertical solar shading system used on the building.

The 270-bed hospital is the UK's first NHS hospital to provide single en-suite rooms for every patient. It is constructed using a steel frame system, with the wall section consisting of 80mm insulation and a rear ventilated cavity created using the Natura rainscreen cladding.

The walls achieve a wall U-value of 0.25W/m²K, which exceeds the minimum project design U-value of 0.28 W/m²K. The Natura panels were through fixed with rivets to an aluminium frame.

The main contractor was BAM Construction and Nightingale Associates were the architects.

Architect Lindsay Gibbon explains: "Materials for the external facade were chosen because of their visual properties, low maintenance requirements and cost effectiveness. We specified Natura because it met all these criteria, and the wide choice of colours allowed us to select exactly the shade we had envisaged."

Ms Gibbon adds that the Marley Eternit panels were specified after their successful use on a previous Nightingale Associates project, the Singleton Hospital in Swansea.

The Natura panels enhance the striking appearance of the new hospital because the surface finish allows the fibre cement substrate to show through, creating a unique and attractive appearance.

Natura is available in a wide choice of colours and finishes. Practical qualities of the material include fire classifications A2-s1-d0 non combustible and EN 13501-1, durability, strength and an installed life expectancy of at least 50 years.

The Pro coating offers good protection against various types of staining during the construction phase, as well as graffiti produced by common aerosol, which can be eliminated by graffiti removers.



Natura, University Campus Suffolk



Natura, White River Place, St Austell



Natura, Gillespie Road, Highbury, North London

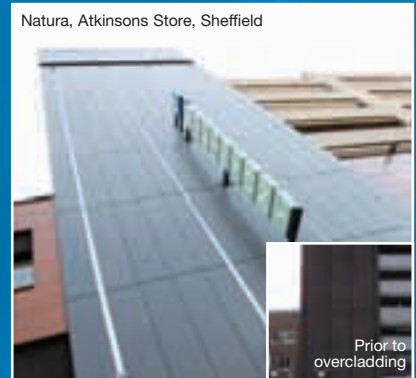


Marley Eternit fibre cement cladding is also suitable for a range of applications including: commercial, education, housing and as an overlaid solution.

Textura, Prestwich Arts College



Natura, Atkinsons Store, Sheffield



→ For more information

Visit www.marleyeternit.co.uk/cladding

E-mail info@marleyeternit.co.uk

Call 01283 722588



an **Etex** GROUP company

Marley Eternit Limited, Lichfield Road, Burton-on-Trent, DE14 3HD

*Marley Eternit fibre cement cladding can achieve an A+ rating as defined in the BRE Green Guide to Specification based on generic rating for autoclaved fibre cement single sheet (Element ref: 80623042, 806230422, 806230447, 806230450) and autoclaved fibre cement (calcium silicate) cladding (Element Ref: 806220701, 806220675, 806220676)