

A+

Marley Eternit's fibre cement cladding can achieve an A+ rating as defined in the BRE Green Guide to Specification*

Hotels

INNOVATIVE FIBRE CEMENT
CLADDING SOLUTIONS





Etap Hotel



Location:	Southampton
Product:	Natura in Amber
Specifier:	Pope Priestley

“
Natura gives the hotel a really modern and fresh appearance and proved to be the ideal solution because it is low maintenance.”

Paul Upton, General Manager,
Etap Hotel, Southampton

Marley Eternit checks in at Etap Hotel

Natura fibre cement cladding in colour Amber has been specified on the 124-bedroom city centre hotel because of its excellent weather resistant qualities, which will protect the building from strong winds and sea spray that sweep inland from the nearby coastline.

Paul Upton, General Manager at Etap Hotel, Southampton, explains: “Natura gives the hotel a really modern and fresh appearance and proved to be the ideal solution because it is low maintenance. An additional advantage was that it is available in a range of colours, which allowed the designers to meet Etap corporate guidelines.”

Marley Eternit's Natura panels are offered in a range of colours and coating options and have a life expectancy of at least 50 years to meet performance and aesthetic needs and provide a long term low maintenance solution for building owners. Natura also meets Class 0 and EN 13501-1 fire performance and is classified to A2-s1, d0 non-combustible.



Hope Street Hotel

Location:	Liverpool
Product:	Natura in Anthracite
Specifier:	Falconer Chester Hall
Installer:	Carpenter Projects Limited

“
We specified Natura in Anthracite because of its attractive appearance, lightweight nature and through-colouring, which we knew would help retain its clean, crisp appearance.”

Mark Dooham, Director,
Falconer Chester Hall



Hotel topped-off with Marley Eternit fibre cement cladding

The award-winning extension to Liverpool's Hope Street Hotel has been topped-off with a lightweight Natura fibre cement decorative rainscreen cladding solution from Marley Eternit.

Instead of demolishing the 1960s office block alongside the hotel, client Hope Street Hotel Ltd. worked with architects Falconer Chester Hall to draw up an ambitious design which maintained the structurally sound reinforced concrete framework, whilst adding four additional storeys clad in Anthracite coloured Natura fibre cement rainscreen cladding.

The clean, modern lines created by Natura created a striking visual contrast to the 1860s Venetian-style building which forms the original part of the hotel.

Using lightweight fibre cement Natura cladding meant that the existing foundations could support the loading of the enlarged building. This avoided having to demolish and build new, reducing the environmental impact of the project as well as saving an estimated £500,000 in construction costs.

The completed building won The Best Sustainable Project in the North West Regional Structural Awards organised by The Institute of Structural Engineers.



Ibis Hotel



Location:	Gloucester
Product:	Cedral Weatherboard in Light Oak
Specifier:	Leach Rhodes Walker
Installer:	Flairlane Joinery UK Limited

“
We wanted to create the appearance of timber cladding to echo the turn of the century buildings in Gloucester’s dockland area and specified fibre cement Cedral Weatherboard because it met this criteria, along with having excellent aesthetics and long-term durability.”

Andrew Forrest, Project Architect,
Leach Rhodes Walker



Cedral Weatherboard checks in at hotel with modern twist

Marley Eternit’s fibre cement Cedral Weatherboard has been specified to give the 127 room Ibis hotel in Gloucester a traditional facade with a modern twist.

The client worked with the architects and planning authorities to create a building that would sit comfortably with proposed nearby residential developments and reflect the vernacular architectural style of the docklands area.

Planners considered that an original design for an aluminium clad, geometric building was too imposing for its setting. They preferred the design drawn up by architects at Leach Rhodes Walker, which featured Cedral Weatherboard in Light Oak on all four facades, along with a traditional pitched roof construction.

The building was constructed with a steel framed site fixed system (SFS) which includes three separate layers of insulation: 50mm of high density mineral wool, 45 mm of rigid insulation and 50mm of cavity insulation. The Cedral Weatherboard was fixed to timber battens as part of a rear ventilated cladding system.

Cedral Weatherboard is made from fibre cement, which means it won’t warp or shrink over time, or need constant re-painting. Its subtly textured surface gives the appearance of timber.

Premier Inn



Location:	Bury
Product:	Natura in Anthracite
Specifier:	Carey Jones Architects
Installer:	MIB Facades Limited

“*Marley Eternit was quick to understand our requirements and presented us with a sample of Natura with the Pro coating in Anthracite – we particularly liked its colour and texture, which creates far more visual interest than, for example, a flat masonry-based facade.*”

Patrick Evers, Carey Jones Architects



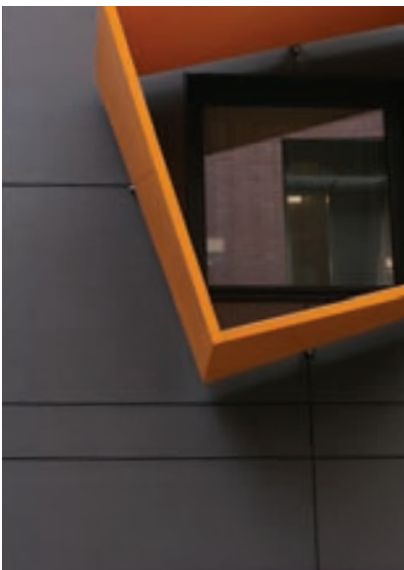
Marley Eternit's Natura provides premier solution for hotel

Natura decorative rainscreen cladding from Marley Eternit has been specified on the eye-catching 115-bed Whitbread Premier Inn in Bury, Greater Manchester.

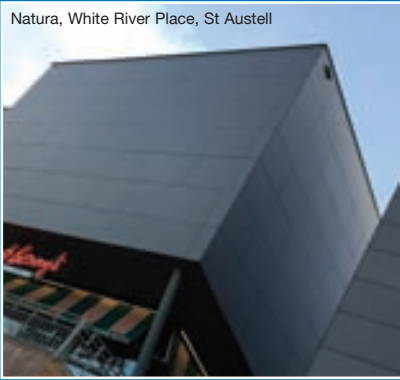
Natura fibre cement cladding with the anti graffiti Pro coating was specified in colour Anthracite by architects Carey Jones to give the building a dynamic and engaging facade, whilst accentuating the vivid yellow trapezoid-shaped window surrounds, which also serve a practical purpose of reducing solar gain.

Patrick Evers of Carey Jones Architects explains: “We specified Natura because we wanted a natural-looking material in a colour that would accentuate the yellow window surrounds.”

“As well as matching our aesthetic requirements,” he adds, “The Marley Eternit fibre cement panels are high quality and easy to install on site. They are also a long term, low maintenance solution and met our criteria for sustainability because they can achieve an A+ rating as defined in the BRE Green Guide to Specification.”



Natura, White River Place, St Austell



Cedral Weatherboard, West Sussex (overcladding)



Natura, York University



Marley Eternit fibre cement cladding is also suitable for a range of applications including: education, commercial, healthcare, housing and as an overclad solution.

Natura, Caerphilly Hospital



Eter-Color, Bissegem, Belgium

Call
Email
Or visit



on 01283 722588
at info@marleyeternit.co.uk
www.marleyeternit.co.uk/cladding



an **Etex** GROUP company

Marley Eternit Limited, Lichfield Road, Branston, Burton-on-Trent, DE14 3HD

*Marley Eternit fibre cement cladding can achieve an A+ rating as defined in the BRE Green Guide to Specification based on generic rating for autoclaved fibre cement single sheet (Element ref: 80623042, 806230422, 806230447, 806230450) and autoclaved fibre cement (calcium silicate) cladding (Element Ref: 806220701, 806220675, 806220676)